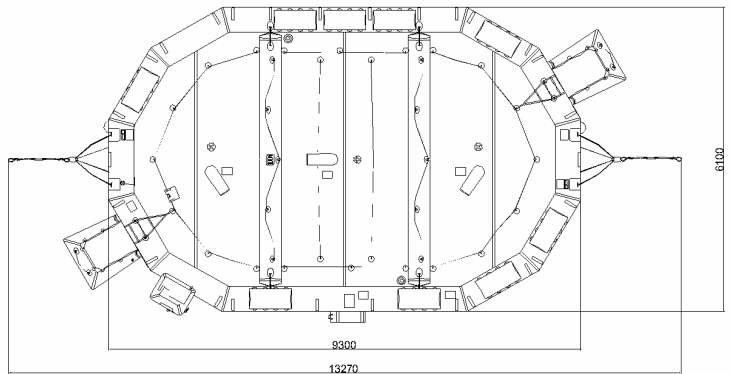
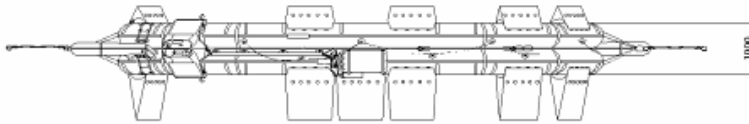
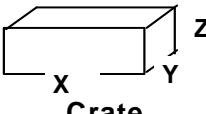




ORIL 100 MAN VENTURI OPEN REVERSIBLE INFLATABLE LIFERAFT ROUND CONTAINER



TECHNICAL INFORMATION

100 MAN V	HSC PACK / RINA PACK		
Container	N16		
Dimensions	X: 1450 mm	Y: 800 mm	Z: 740 mm
	X: 4' 9,09"	Y: 2' 7,5"	Z: 2' 5,14"
Liferaft Net Weight	220 kg / 486 pounds		
Max. height stowage	20 m / 66'		
Painter line length	20 m / 66'		
Inflation Cylinder	2 x 15 liter + 1 x 2,83 liter		
 Crate	X: 1525 mm	Y: 850 mm	Z: 880 mm
	X: 5' 0,04"	Y: 2' 9,47"	Z: 2' 10,65"
	260 kg / 574 pounds		
	1,141 m ³ / 40,28 cubic foot		
Towing force	2 knots	3 knots	
Without sea anchor	220 daN	420 daN	
With sea anchor	240 daN	480 daN	

Approvals: EC (MED) – BV – CRS

ORIL 100 V cont rond Zodiac 28062010 KLT.doc Issue: 2 Date: 28/06/2010

Dimensions and weight +/- 5% Zodiac reserves the right to change specification without notice.
For installation, add minimum +10mm for clearance to dimensions of the container.